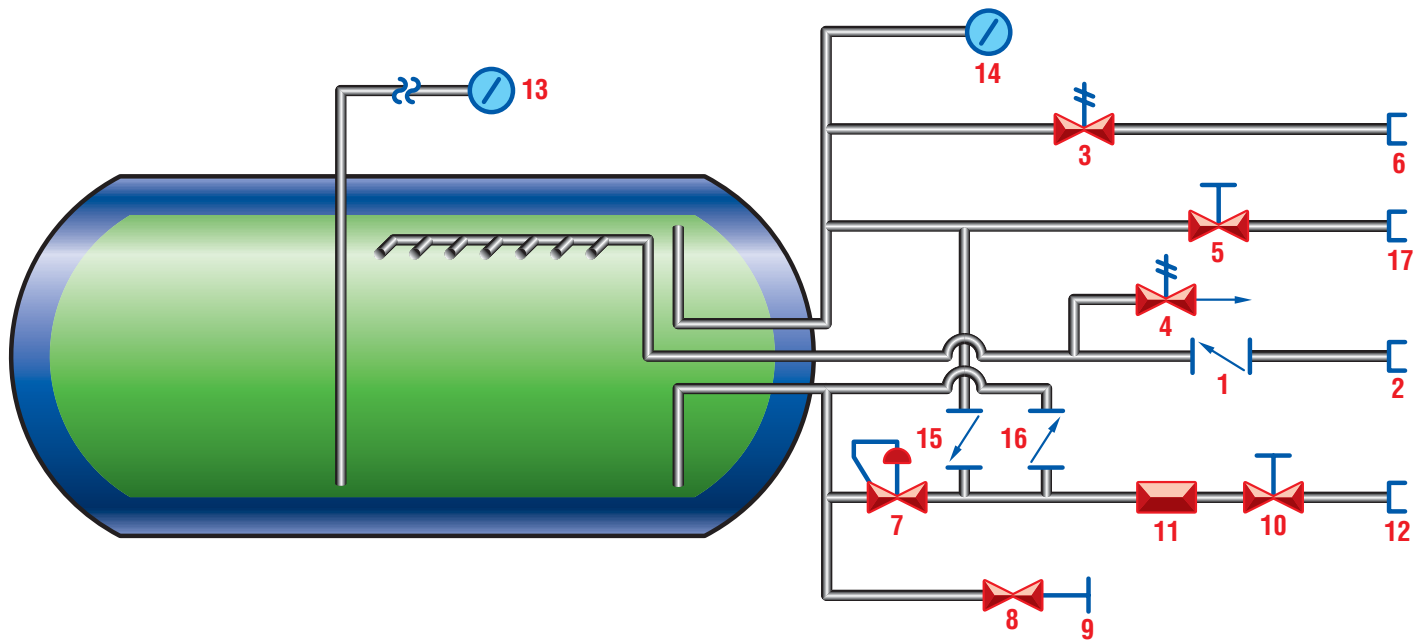




# LNG VEHICLE FUEL TANK

TAYLOR - WHARTON  
INTERNATIONAL LLC

**AFT**  
Alternate Fuel  
Technologies



## LEGEND

- |                           |                                    |  |
|---------------------------|------------------------------------|--|
| 1. FILL CHECK VALVE       | 7. TANK PRESSURE CONTROL REGULATOR | 13. LIQUID LEVEL GAUGE                         |
| 2. FILL CONNECTION        | 8. DRAIN VALVE                     | 14. TANK PRESSURE GAUGE                        |
| 3. PRIMARY RELIEF VALVE   | 9. DRAIN CONNECTION (CAPPED)       | 15. VAPOR WITHDRAWAL BACK PRESSURE CHECK VALVE |
| 4. SECONDARY RELIEF VALVE | 10. MANUAL FUEL SHUT-OFF VALVE     | 16. FUEL LINE RELIEF/BACK PRESSURE CHECK VALVE |
| 5. VENT VALVE             | 11. EXCESS FLOW VALVE              | 17. VENT RECEPTACLE                            |
| 6. VENT STACK CONNECTION  | 12. TANK FUEL OUTLET               |  |

# TAYLOR - WHARTON INTERNATIONAL LLC

The People You Know, The Products You Trust

[www.twiglobaltech.com](http://www.twiglobaltech.com)  
[www.taylorwharton.com](http://www.taylorwharton.com)  
[www.scicomposites.com](http://www.scicomposites.com)

## *Global Gas Solutions For the 21<sup>st</sup> Century*



**American Welding & Tank**  
[www.awtank.com](http://www.awtank.com)

**Taylor-Wharton**  
[www.taylorwharton.com](http://www.taylorwharton.com)

**Taylor-Wharton International**  
[www.twiglobaltech.com](http://www.twiglobaltech.com)

**Structural Composites Industries**  
[www.scicomposites.com](http://www.scicomposites.com)

**Sherwood Valve**  
[www.sherwoodvalve.com](http://www.sherwoodvalve.com)