



Taylor-Wharton

**LASER
PAK III**

**Now
Available**

High Flow, High Pressure Gas Delivery System



- **Designed for high pressure, high flow applications:** Designed specifically for the shop with 1 or 2 lasers. Ideal to help mode convert your customer from high pressure to liquid delivery. Capable of 3,000 scfh intermittent at > 400 psig.
- **Continuous "full-to-empty" performance:** T-W's industry leading external vaporizer & pressure builder design assures continuous "full-to-empty" high capacity performance. Stop compromising performance with "internal vaporizer" designs never intended for high flow applications and that are not capable of maintaining consistent high pressure.
- **Portable:** Rugged pallet base design is forklift friendly. Deliver product to where it's needed. DOT 4L design is flatbed ready.
- **Builds to operating pressure rapidly:** Minimize start up time and maximize your customer's available operating time.
- **Easy to install:** Plug and play design. No additional vaporizers needed. Simply connect to final line regulator and gas delivery circuit and you're operational.

Specifically designed to meet the demanding requirements of today's high flow and high-pressure laser applications.

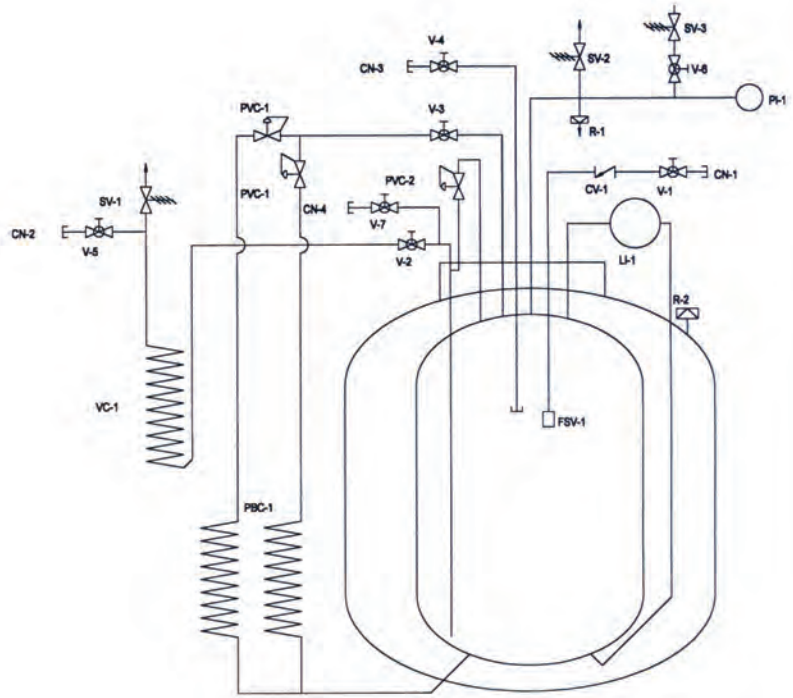


Taylor-Wharton

Call Taylor-Wharton at:

(800) 898-2657

- CN-1 PUMP/TOP CONNECTION
- CN-2 GAS WITHDRAWAL CONNECTION
- CN-3 VENT/TRYCOCK CONNECTION
- CN-4 LIQUID FILL/WITHDRAWAL CONN.
- LI-1 LIQUID LEVEL GAUGE
- PI-1 PRESSURE GAUGE
- PBC-1 PRESSURE BUILDING COIL
- PVC-1 PRESSURE BUILDING REGULATOR
- PVC-2 ECONOMIZER REGULATOR
- R-1 SAFETY DISC
- R-2 OUTER CASING SAFETY DISC
- SV-1 SAFETY VALVE, 500 PSIG
- SV-2 SAFETY VALVE, 500 PSIG
- SV-3 SAFETY VALVE, 22 PSIG
- V-1 VALVE, PUMP TOP FILL
- V-2 VALVE, VAPORIZER ISOLATION
- V-3 VALVE, PRESSURE CIRCUIT
- V-4 VALVE, VENT/TRYCOCK
- V-5 VALVE, GAS WITHDRAWAL
- V-6 VALVE, ISOLATION
- V-7 VALVE, LIQ. FILL WITHDRAWAL
- VC-1 VAPORIZER COIL
- FSV-1 FILL STOP VALVE*
- CV-1 PUMP/TOP FILL CHECK VALVE



*Works with Express Automatic Filling System

Specifications

| General Information | Dimensions & Tare Weight | Capacities | |
|--|---|--|--|
| Model: LP 3 | Pallet Base: (in) 42.25 x 34.25 (mm) 1,073 x 870 | Gross: (gal.) 115 (liters) 437 | |
| Part Number: LP3000 | | | |
| NER: 1% per day Oxygen | Height: (in) 89.90 (mm) 2,283 | Usable Liquid: (gal.) 104 (liters) 393 | |
| Outer Vessel Material: 304 S.S. | | | |
| Gas flow rates: <i>Continuous</i> 2000 scfh@ >350 psig <i>Maximum</i> 3000 scfh | Outer Vessel: (in) 30 (mm) 762 | Weight of contents*: Oxygen (lbs) 845 (kg) 383 Nitrogen (lbs) 557 (kg) 252 Argon (lbs) 1,028 (kg) 466 | |
| | | | Tare Weight: (lbs) 1,480 (kg) 671 |
| Design Specification: DOT-4L | | | Gaseous volumetric capacity*: Oxygen (scf) 10,210 Nitrogen (scf) 7,690 Argon (scf) 9,950 |
| | | | |

* Based on DOT rated service pressure (500 psig)



Taylor-Wharton Cryogenics
4075 Hamilton Blvd.Theodore,
AL 36582
Phone: (334) 443-8680
(800) 898-2657
Fax:(334) 443-2250